

RATINGS FEEDBACK – WILLIAM WRITER WINTER ENTRY – MY CHALLENGE ENTRY

OVERALL:

My Challenge Entry ranked 25th in Level 3 (a highly competitive level), and 65th overall.

There were three judges on duty for this topic--two women and one man. The judges were all from different age groups.

When mention is made of lowest or highest ratings in the following feedback, it is specifically to do with your entry (not as compared to any other entry that week).

General Guide to Rating Descriptions (as used in feedback):

Poor:	Rated at the lowest end of the scale and was considered exceptionally weak.
Below Average:	Rated below the middle of the field of entries and was considered weak. This usually means an entry was rated between 2 and 2.4.
Average:	Rated right in the middle of the scale, and considered average. Not particularly strong. This usually means an entry was rated between 2.5 and 2.9.
Above Average:	Rated just above the middle of the field of entries. Although not outstanding, it was considered a little better than average. This usually means the entry received a rating between 3 and 3.4.
Good:	Basically, what it says. This usually means the entry received a rating between 3.5 to 3.9.
Very Good:	The entry had a strong rating, usually between about 4 to 4.5.
Excellent:	The entry had a rating up to about 4.9.
PERFECT:	The entry rated 5 for a category and was considered outstanding.

* * *

CRITERIA 1: HOW WELL DID THIS ENTRY FIT THE TOPIC?

The judges' combined average rating ranked this entry as **very good for topic**, and that was very definitely deserved. One judge actually gave it a PERFECT score for this category; however the other two judges' rated it a little lower.

CRITERIA 2: HOW CREATIVE WAS THIS ENTRY?

The ratings took a bit of a dip when it came to this category, as I believe there were quite a few entries that came from very similar angles regarding the winter of our lives.

Overall, the combined judges' ratings ranked this entry as **good for creativity**.

CRITERIA 3: HOW WELL CRAFTED WAS THIS ENTRY?

Where creativity dipped, the ratings for crafting rose. Two judges gave *My Challenge Entry* an identical rating in the very good range, and one rated it at the top end of the good range.

Overall, this gave your entry a combined judges' rating in the **very good range for crafting**.

CRITERIA 4: DID THE ENTRY START WELL?

There was a small swing of opinion regarding how well your entry started. One judge rated it as excellent; one rated it at the low end of the very good scale; and one rated it at the top end of the good scale.

Overall, this gave your entry a combined judges' rating in the **very good range for how well it started**.

CRITERIA 5: DID THE ENTRY COME TO A SATISFYING CONCLUSION?

Ratings took another dip when it came to this category. Even so, the judges were almost completely united in their ratings, with two rating it as good and one rating it as very good.

Overall, this gave your entry a combined judges' rating in the **good range for satisfying conclusion**.

CRITERIA 6: DID THIS ENTRY HAVE A CLEAR POINT OR MESSAGE?

Ratings swung back up again when it came to clarity of message. One judge rated it as excellent for clarity of message; one rated it as very good; and one rated it at the low end of good.

Overall, this gave your entry a combined judges' rating in the **very good range for clarity of message**.

CRITERIA 7: DID IT FLOW SMOOTHLY?

Two judges felt your entry was very good for flow, and one rated it at the top end of the good scale. This gave your entry a combined judges' rating in the **very good range for flow**.

CRITERIA 8: DID IT HAVE MINIMAL ERRORS WITH GRAMMAR?

Overall, *My Challenge Entry* received a combined judges' rating in the **very good range for grammar**. In fact, this category was the highest ranked for your entry.

CRITERIA 9: HOW WELL DID IT WORK WITHIN ITS OWN GENRE?

One judge rated your entry as excellent for genre; one rated it as very good; and one rated it as good.

Overall, this gave your entry a combined judges' rating in the **very good range for genre**.

CRITERIA 10: HOW WELL DID THE ENTRY CONNECT WITH OR INVOLVE THE READER?

This is, perhaps, the most important category of all. I've seen technically brilliant entries leave readers cold because they've failed to connect with the reader. I've also seen fairly weak ones do much better because they hit the right spot with the reader.

Although personal opinion is involved in all the categories, this is the only category that specifically asks for that opinion. If a writer doesn't connect with a reader, then they've missed the boat.

So how did *My Challenge Entry* connect with the reader (from the judges' perspective)? One judge rated your entry as very good for reader connection, and two rated it as good.

Overall, this entry received a combined judges' rating **at the top end of the good range for reader connection.**

* * *

Category Rankings for *My Challenge Entry*

Highest Ranked Category -- Grammar.

2nd -- Genre.

Tied for 3rd -- Good Start and Flow.

4th -- Clarity of Message.

5th -- Crafting

6th -- Topic.

Tied for 7th -- Satisfying Conclusion and Reader Connection.

Lowest Ranked Category -- Creativity.

* * *

Final Thoughts...

Overall, *My Challenge Entry* was a solid entry that did quite well in a week of high competition. The overall combined judges' rating placed it at the **low end of the very good range.**

The judges definitely liked your entry, but it just needed that little bit extra to push it up in the ranks.

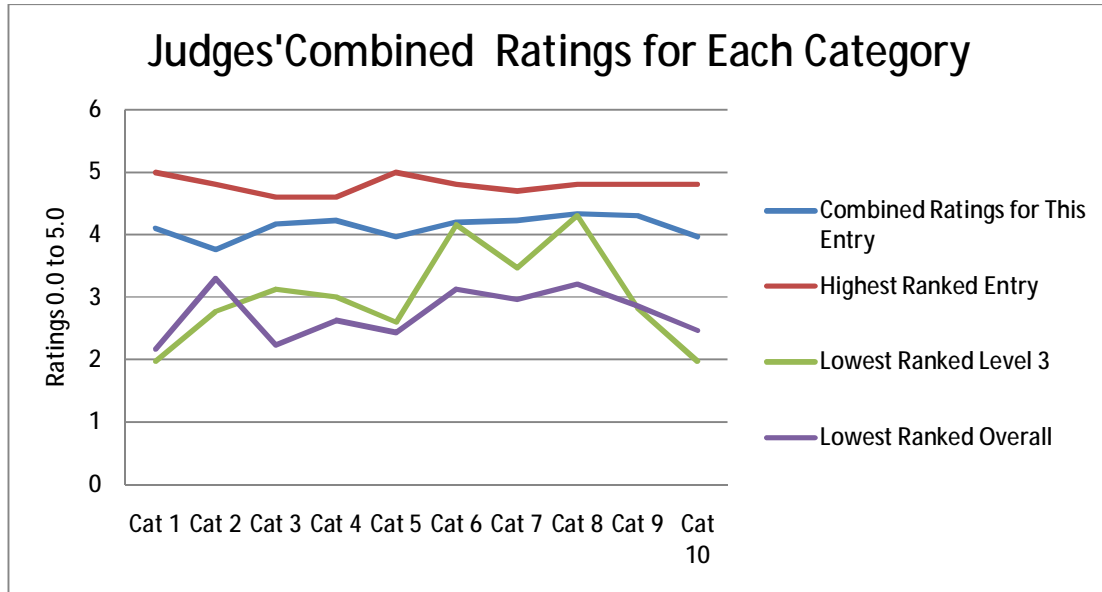
The following graph gives an overview of how your entry compared to that of the highest ranked entry overall (*Winter is Cold*), as well as with the lowest ranked entry for Level 3 and the lowest ranked entry overall. The key to the Categories (cat 1, cat 2, etc) is directly beneath the graph. Please ignore the 6th row in the graph, as the judges only rate between 0.0 and 5.0.

As you can see, this graph clearly shows the biggest dips for your otherwise very consistent entry, but even your biggest dips were not really that bad. All within the good range.

The graph also shows how the 1st place winner overall was fairly consistently in the excellent and perfect range. Your ratings were pretty much paralleling the 1st place winner, but just in that lower band.

For the most part, you were well ahead of both the lowest ranked entry for Level 3 and overall.

So be encouraged. Although you may not have made it into the highest rankings, your entry was still considered very good.



- Cat 1: Topic
- Cat 2: Creativity
- Cat 3: Crafting
- Cat 4: Good Start
- Cat 5: Satisfying Ending
- Cat 6: Clarity of Message
- Cat 7: Flow and Grammar
- Cat 8: Grammar
- Cat 9: Genre
- Cat 10: Reader Connection/Involvement